

EW200 units

2 m³/h

Purification unit for water treatment in emergency situations

The principle used by the EW200 unit is based on standard process of physico-chemical treatment per coagulation - flocculation, decantation with filtration on 2 layers and then adsorption on activated carbon. The final disinfection is realized by injection of a chlorine based solution. This unit is completely autonomous and doesn't require any electrical power.

Composition

- Gasoline motorpump in standard
- Coagulation/flocculation frame with slow dissolving tablets (aluminium sulphate, iron sulphate, anionic and cationic polymer)
- Flocculation/decantation in 80 meters of flat hoses
- Aluminium frame with injected thermo-plastic filter (or stainless steel) and connection between the different elements with half symmetrical Guillemin fittings (Storz, Barcelona ... on request)
- The coagulation and flocculation chambers with the static mixers are also mounted on an aluminium frame.
- Connection between the different elements by PVC pipe with shock-resistant spiral.



Technical characteristics of the different version*

*This document is not a contractual commitment and is for informational purposes only. A. Aqua SAS reserves the right to modify its equipment at any time

Model	Qty of frame	Sizes of the frame (mm)				Sizes Box (cm)	Weight (kg)
		Frame 1	Frame 2	Frame 3	Frame 3		
EW202LCH	2	FS+FC+DM 915x750x995	KCF 585x385x342	-	-	120x80x116	280
EW202LCN	2	FS+FC+DP 915x750x995	KCF 585x385x342	-	-	120x80x116	311
EW203EH	3	FSI 380x380x720	FCI+DM 520x480x720	KCF 585x385x385	-	120x80x116	240
EW204EN	4	FSI 380x380x720	FCI 520x480x720	DP 530x490x770	KCF 585x385x385	120x80x155	271

FS : Injected resin sand filter - FSI : Stainless steel sand filter - FC : Injected resin carbon filter - FCI : Stainless steel carbon filter - DM : Venturi dosing system - DP : Proportional dosing system - KCF : coagulation/flocculation

A.Aqua SAS

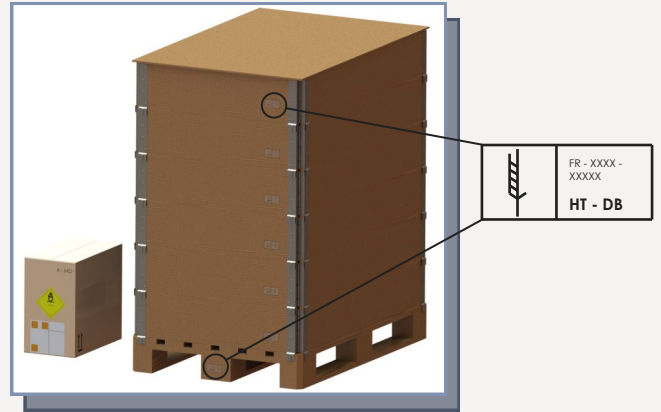
126 route du Mollard Rond - 38620 Saint Bueil - France
Tel. +33 (0)476 063 938 • Fax. +33 (0)476 553 474 • e-mail : info@a-aqua.fr



Without any electrical nor electronic part, the EW200 unit can run in any climatic conditions (not in frost period). Its implementation is easy and fast (less than one hour for installation and starting). Packaging, wooden crate with pallet sections, is reusable and compliant with ISPM15 standard for all modes of transport.

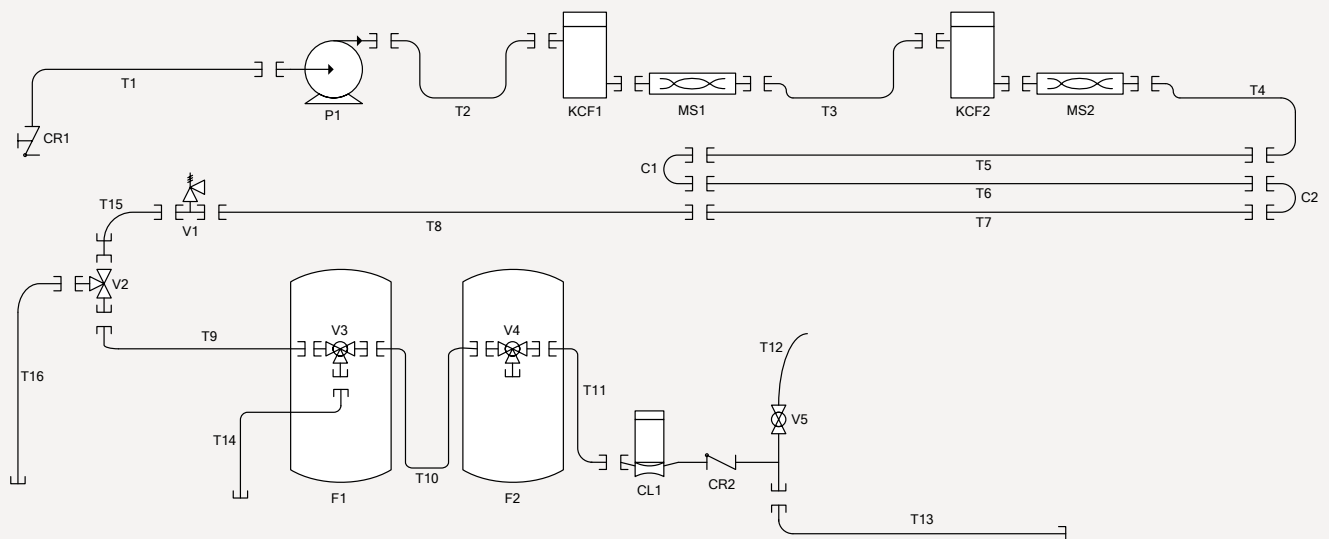
Packaging

For the unit with venturi dosing system (HTH), the calcium of hypochlorite is packed separately for road freight in standard (airfreight repacking on request). For the unit with proportional dosing system, the DCCNa granule is packed in one of the wooden boxes (not covered by international regulation on the transport of dangerous goods).



Installation scheme*

*Installation scheme of the version EW203EH



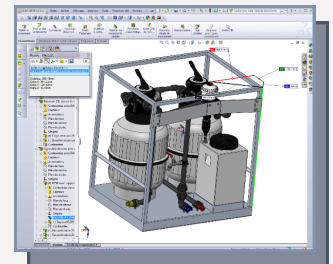
C1...C3	Redirection elbow	F2	Activated carbon filter	T2,T3,T9,T10,T13	3m PVC pipe DN50	T15	1m PVC pipe DN50
CL1	Chlorinator or proportional dosing pump	KCF1,KCF2	Coagulation kit	T5...T8	20m flat hose DN50	V1	Safety valve
CR1	Foot valve - strainer	MS1,MS2	Static mixers	T14,T16	3m PVC pipes DN50	V2	3 ways valve
CR2	Non return valve	P1	Motorpump	T11	1,5 m PVC pipe DN50	V3, V4	Multiport valves
F1	Multimedia filter	T1,T4	6m PVC pipe DN50	T12	1m PVC pipe DN19	V5	Sample valve



Training (South Africa)



Demonstration (civil security)



3D conception of the unit

A.Aqua SAS

126 route du Mollard Rond - 38620 Saint Bueil - France
 Tel. +33 (0)476 063 938 • Fax. +33 (0)476 553 474 • e-mail : info@a-aqua.fr